

# The latest in the Star range...

**NEW**



## HSP7000

Combining key features from Stars celebrated range to produce the world's fastest hybrid printer this printer incorporates the high quality thermal print mechanism designed for the market leading 203 dpi 250mm/second TSP100GT Series as well as components from the high speed SP700 matrix printer.

**NEW**



## TSP100GT

The new Super-fast 250mm/second version of the TSP100U *futurePRNT* with market-leading software and accessories included free-of-charge and available in full gloss Piano Black or Ice White. *New Splash-proof cover and display stand options now available.*

**NEW**

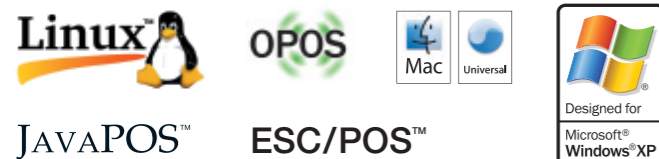
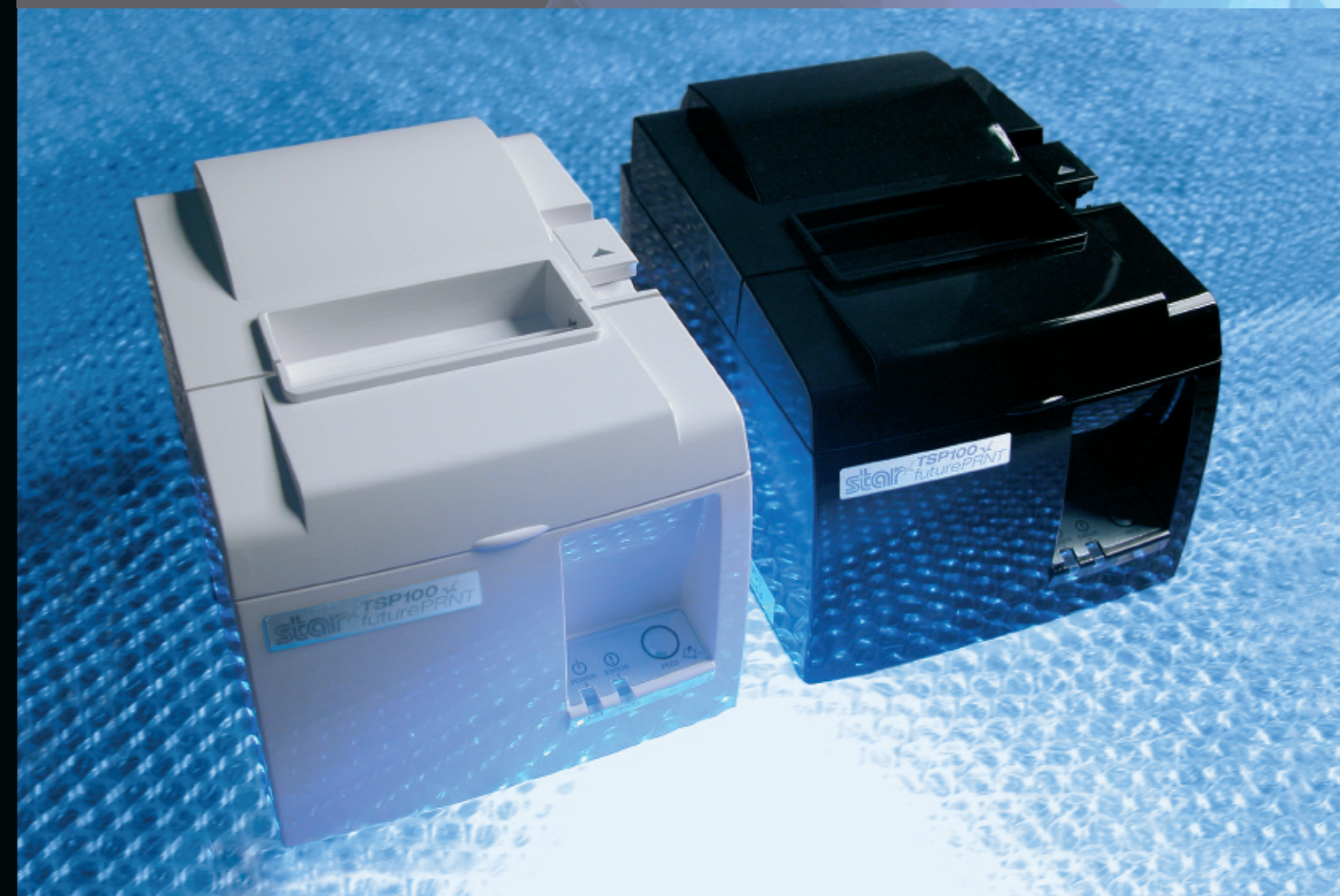


## TSP100LAN

One of the latest additions to the TSP100 *futurePRNT* Series. The new dedicated Ethernet version provides for long distance reliable communication from multiple hosts at an entry-level price.

# The world's largest range of Matrix and Thermal POS Printers

BARCODES ¥ RETAIL ¥ RECEIPTS ¥ HOSPITALITY ¥ LABELS ¥ KIOSK ¥ TICKETS



**For further information on the full range of POS printers, visit the Star website or go to [www.futurePRNT.com](http://www.futurePRNT.com) for exclusive details of the TSP100 series.**

STAR MICRONICS CO., LTD. 536 Nanatsushinya, Shimizu-ku, Shizuoka, 424-0066 Japan  
Tel: +81-54-347-2163 Fax: +81-54-347-0409

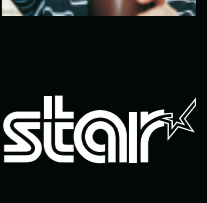
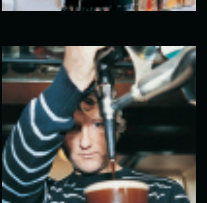
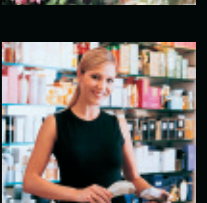
<http://www.star-m.jp/eng/>

JP08.08

# 2008



POS  
printers



<b>DP8340</b>	<b>SP500</b>	<b>NEW SP700</b>	<b>SP298</b>	<b>NEW HSP7000</b>	<b>SCP700</b>	<b>NEW TSP100</b>	<b>NEW TSP650</b>	<b>NEW TSP700II</b>	<b>TSP800</b>	<b>TSP828</b>	<b>TSP1000</b>
SERIAL MATRIX IMPACT PRINTERS				HYBRID PRINTERS		DIRECT THERMAL LINE PRINTERS					

**APPLICATIONS**

	DP8340 SERIES <i>Wide Format 9-pin Matrix</i>	SP500 SERIES <i>High Speed 9-pin Matrix</i>	SP700 SERIES <i>9-pin Mono / Red &amp; Black Matrix</i>	SP298 SERIES <i>High Speed 9-pin Matrix Slip</i>	HSP7000 SERIES <i>Fast Thermal / Matrix Slip Hybrid</i>	SCP700 SERIES <i>Thermal Label / Receipt &amp; Matrix Slip</i>	TSP100 futurePRNT™ <i>Low Cost Direct Thermal</i>	TSP650 SERIES <i>Direct Thermal</i>	TSP700II SERIES <i>High Speed Direct Thermal</i>	TSP800 SERIES <i>Wide Format Direct Thermal</i>	TSP828 SERIES <i>Wide Thermal Label Printer</i>	TSP1000 SERIES <i>Direct Thermal with Stacker</i>
RECEIPTS	✓	✓	✓	✓	✓	✓	✓	✓	✓ Coupon Marketing Tool	✓		✓
AUDIT TRAILS		✓	✓				✓ Daily Software Journal	✓ Raster Journal option	✓ Raster Journal option	✓ Raster Journal option		
BARCODES					✓		✓ Receipt / Coupons only	✓ Receipt / Coupons only	✓	✓	✓	✓ including PDF417 or MAXICODE (2D)
CHEQUES				✓	✓							
KIOSK		UP542							✓ Coupon Marketing Tool	✓		
LABELS	DP8340S					✓			✓	✓	✓	
MOBILE	✓		✓*	✓*			✓*	✓*	✓*	✓*	✓*	
RESTAURANT	✓	✓ Splash Resistant	✓	✓	✓	✓	✓ Splash Proof Cover	✓	✓ Splash Proof Cover	✓	✓	✓
SLIP				✓	✓	✓						
TICKETS		✓							✓ up to 150gsm	✓ up to 150gsm		✓ with Stacker
WALL MOUNT	✓ Option	✓ Option	✓ Option				✓	✓	✓	✓ Option		

\* External converter required

**PRINTER FEATURES**

PRINT SPEED	2.0 lps	7.5 lps (16 columns) 4.0 lps (42 columns)	4.7 ~ 8.9 lps	3.1 lps	Matrix Slip: 4.82 ~ 8.9 lps Thermal: up to 250mm/sec.	Matrix: 3.1 lps Thermal: 50mm/sec. or 16.7 lps	TSP100GT up to 250mm/sec. TSP100U, LAN, PUSB up to 125mm/sec.	150mm/sec.	250mm/sec.	150mm/sec. or 47 lps	Up to 150mm/sec. or 35 lps @ 6 lpi (47 lps @ 8 lpi)	Up to 180mm/sec. or 57 lps
AUTOCUTTER	Tear Bar only	SP542 Full or Partial	SP742 Full or Partial	Slip Printer	Thermal Partial cut	Thermal Full or Partial	Partial Cut Autocutter or Tear Bar models	Partial Cut Autocutter or Tear Bar models	Full or Partial cut	Full or Partial cut	Automatic label peeler as standard	Full cut
PAPER WIDTH	114.3mm	76 / 57.5mm	58 / 69.5 / 76mm	80mm minimum	Slip: 68 ~ 230mm Thermal: 76 / 58mm	Slip: 80mm (min) Thermal: 80mm	58 or 80mm	80mm (58mm option)	82.5, 80, 58mm selectable (80mm standard with User Installable Paper Guide fitted)	112mm standard, 82.5 or 80mm options with User Installable Paper Guide option	41 to 108mm thermal label 45 to 112mm thermal paper roll	45 ~ 82.5mm
THICKNESS	0.07 ~ 0.09mm	0.07 ~ 0.10mm	0.06 ~ 0.085mm	0.09 ~ 0.20mm	Matrix: 0.09 ~ 0.31mm Thermal: 0.065 ~ 0.085mm	Matrix: 0.09 ~ 0.20mm Thermal: 0.06 ~ 0.085mm	0.06 ~ 0.085mm	0.06 ~ 0.085mm	0.15mm	0.15mm	Up to 190µm maximum	0.06 ~ 0.15mm
NO. OF COPIES	Original + 1	Original + 2	Original + 2	Original + 2	Matrix: Original + 3 Thermal: Original only	Matrix: Original + 2 Thermal: Original only	Multi-Copy feature for up to 4 automatic fast copies with relevant graphics	Automatic 2nd Copy Raster feature	Automatic 2nd Copy Raster feature	2nd Copy Feature for automatic, fast 2nd copy immediately or later	Original only	Original only
PRINT WIDTH	84.3mm	76mm: 63 or 60mm 58mm: 45mm	60 or 63mm selectable	63mm	Receipt: 51 / 68 / 72 (default) mm Slip: max. 85.4mm	Matrix: 63mm Thermal: 72mm	72mm	72mm	80mm maximum	104mm / 832 dots	104mm maximum	80mm on 82.5mm wide paper
INTERFACE	RS232C or Parallel	RS232C or Bi-directional Parallel with Ethernet and USB option	RS232, Parallel USB 2.0 or no interface with Ethernet option	RS232C or Bi-directional Parallel	RS232C or Parallel with LAN / USB / Powered USB options	9 pin Sub RS232C standard. Additional interface option (25 pin RS232C or Parallel)	Dedicated USB (TSP100U & GT), Ethernet (TSP100LAN) & Powered USB (TSP100PUSB) versions	RS232C or Bi-directional Parallel, with USB or Ethernet options	RS232, Parallel, USB 2.0 or no interface with Ethernet option	RS232C or Bi-directional Parallel, with USB or Ethernet options	USB, RS232C Serial, Parallel, Ethernet	Serial, Parallel or USB as standard. Ethernet / Wireless options
INK RIBBON	SF03B (Black) SF03BR (Black / Red)	RC200B (Black) RC200BR (Black / Red) RC200D Laundry	RC700B (3 million characters), RC700BR (Red / Black)	RC200B (Black) RC200D Laundry	RC-7KB	RC200B (Black)						
POWER SUPPLY	230v AC psu optional 12v DC output	Integral with universal IEC socket	Internal	External Option	External Option	External Option	Internal for all versions except Powered USB	External Option	External Option	External Option	External Option	External Option
RELIABILITY	10 million lines	22 million lines	22 million lines	9 million lines	Slip: 37 million lines Thermal: 60 million lines	Matrix: 9 million lines Thermal: 38 million lines	60 million lines 1 million cuts	60 million lines 1 million cuts	60 million lines 2 million cuts	37 million lines 1 million cuts	37 million lines	60 million lines 1 million cuts
DIMENSIONS (w x d x h) mm	202 x 200 x 98 (without paper holder)	140 x 225 x 163	160 x 245 x 152	180 x 190 x 138.5	186 x 296 x 177	182 x 270 x 194	142 x 204 x 132	142 x 202 x 132	147 x 213 x 148	180 x 213 x 148	180 x 213 x 157	161 x 306.5 x 249

**SPECIAL FEATURES**

DP8340 SERIES <i>Wide Format 9-pin Matrix</i>	SP500 SERIES <i>High Speed 9-pin Matrix</i>	SP700 SERIES <i>9-pin Mono / Red &amp; Black Matrix</i>	SP298 SERIES <i>High Speed 9-pin Matrix Slip</i>	HSP7000 SERIES <i>Fast Thermal / Matrix Slip Hybrid</i>	SCP700 SERIES <i>Thermal Label / Receipt &amp; Matrix Slip</i>	TSP100 futurePRNT™ <i>Low Cost Direct Thermal</i>	TSP650 SERIES <i>Direct Thermal</i>	TSP700II SERIES <i>High Speed Direct Thermal</i>	TSP800 SERIES <i>Wide Format Direct Thermal</i>	TSP828 SERIES <i>Wide Thermal Label Printer</i>	TSP1000 SERIES <i>Direct Thermal with Stacker</i>
Report, receipt & data printer 12 volt psu for mobile use Tear Bar or sprocket versions Black and red output Unique 114mm wide paper	Easy "Drop-in & Insert" paper loading Grey & Star white versions Tear Bar & Autocutter versions 6 position black mark sensor Paper rewind version Buzzer alarm option Near end paper sensor option	Easy-Load, Clamshell™ design Grey & Star white versions Multiple operating platform support with Vista and XP WHQL certification Unique wipe clean / splash-proof design Longer ribbon life Cost-effective two colour print capability	Fastest slip printer available Grey & Star white versions 9-pin quality Auto-side loading with automatic paper positioning	3 Printer versions: HSP7543 Hybrid Combination without MICR HSP7643 Hybrid Combination with top position MICR HSP7743 Hybrid Combination with bottom position MICR Two colour thermal receipts Intelligent front loading	Only Hybrid thermal label (option) & matrix slip printer available Dual interface option Adaptable for fiscal support	Key accessories supplied with printer including interface and power cables (not PUSB) Intelligent futurePRNT™ software included free-of-charge Tear Bar / Autocutter versions Splash proof cover and vertical display stand options New Powered USB, LAN & GT versions available	Easy "Drop-in" paper loading Grey & Star white versions Tear Bar & Autocutter versions Two colour output capability Splash proof cover and vertical display stand options Wall mount and installation CD-ROM included with purchase	Easy "Drop-in" paper loading Grey & Star white versions Only single station barcode, label, ticket & receipt printer available today Splash proof cover option Two colour output capability	Easy "Drop-in" paper loading Grey & Star white versions 112mm wide paper format Automatic A4 to A6 scalable driver Barcode, label & ticket printer External paper feed Two colour output capability	Easy "Drop-in" paper loading Grey & Star white versions Adjustable paper widths from 41 to 108mm wide Label peeler included Paper end & label peeler sensors Two colour output capability	Easy "Drop-in" paper loading Grey, Star white & Red versions 18cm paper roll capacity Includes 30 ticket / receipt stacker Black mark sensors Ticket stacker sensor included Two colour output capability

STAR MICRONICS CO., LTD.  
536 Nanatsushinya,  
Shimizu-ku, Shizuoka,  
424-0066 Japan  
Tel: +81-54-347-2163  
Fax: +81-54-347-0409

